

SECTION-C

Q14) Figure 1 show the detail of a Plummer Block. Assemble the given components and draw the front view (Right half in section) and top view of assembly.

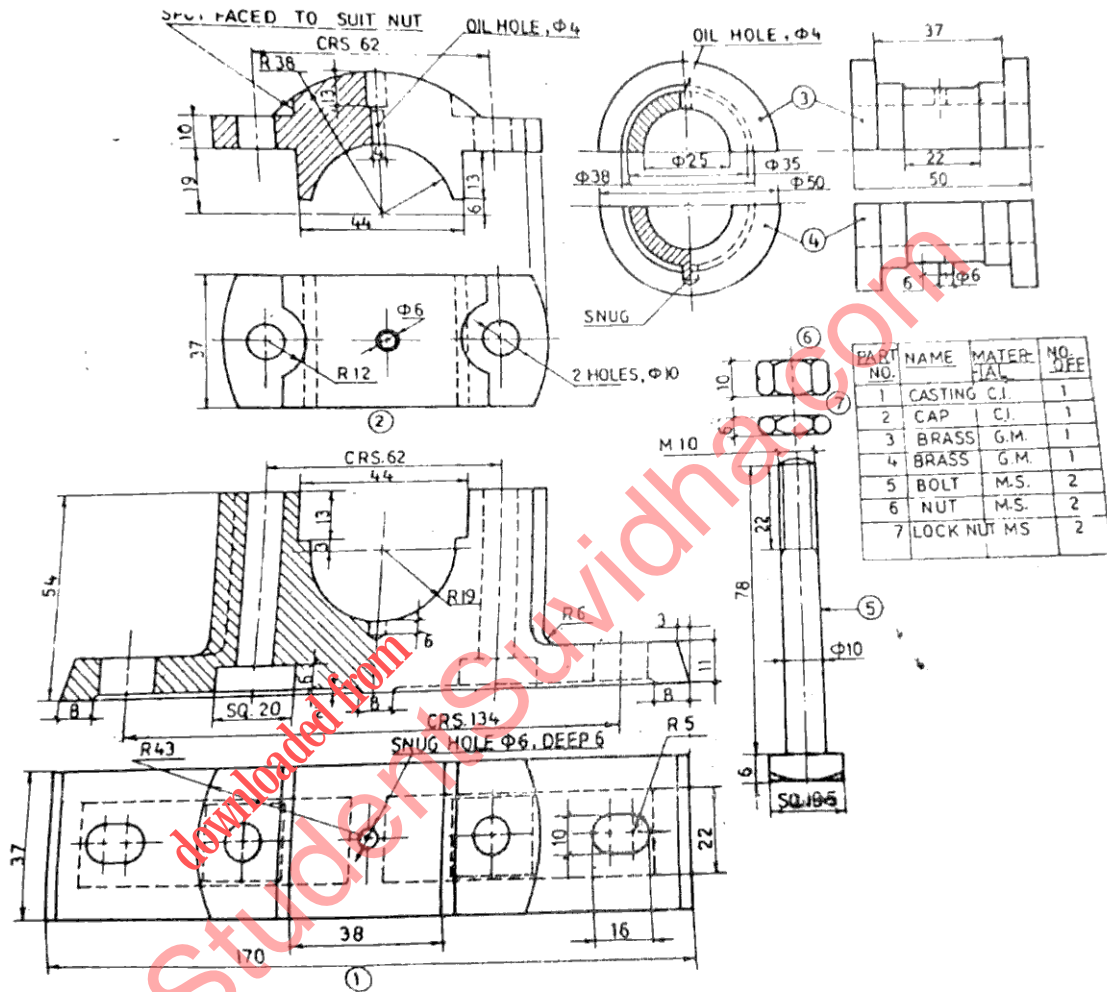


Fig.1 Details of Plummer Block

Q15) Figure 2 show the detail of a cotter joint. Assemble the given components and draw the front view (upper half in section) and top view of assembly.

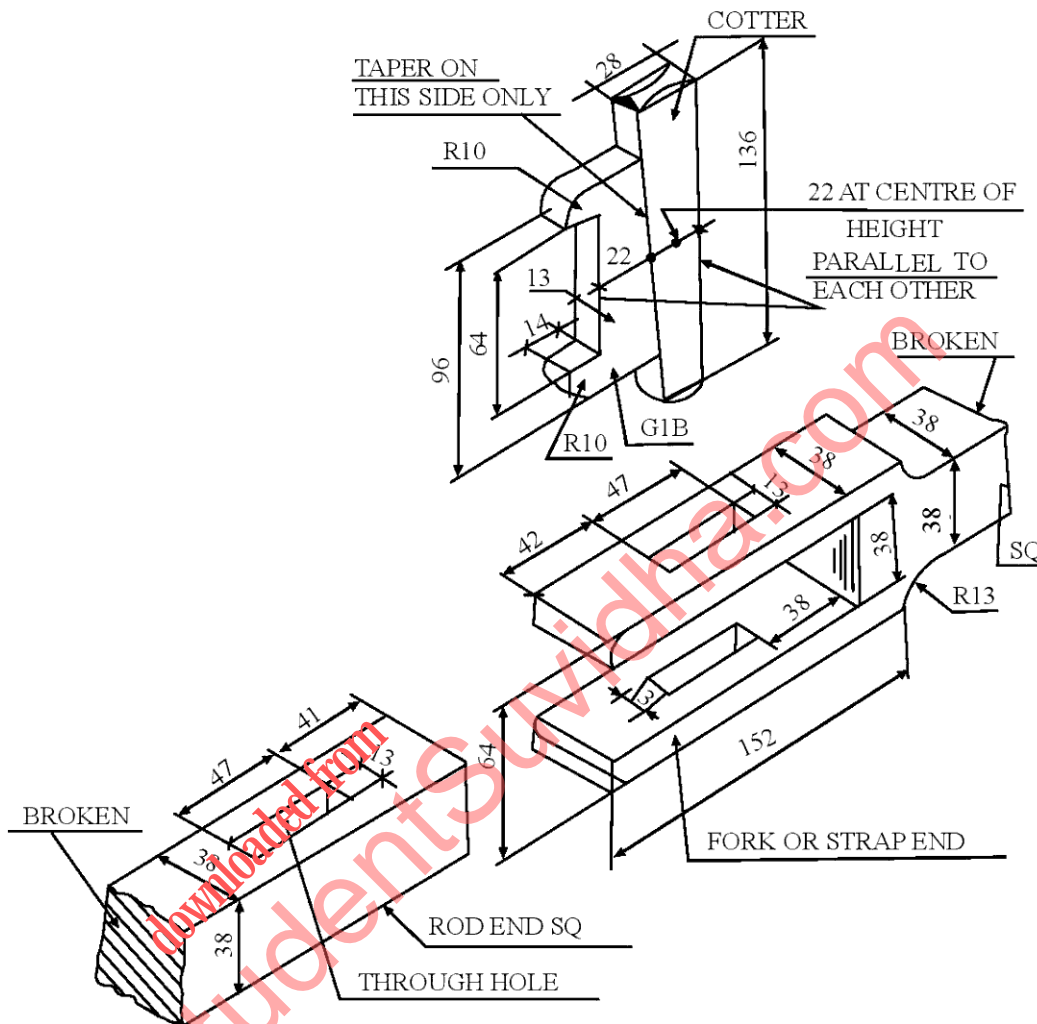


Fig. 2 Detail of Gib and cotter joint for square rod

NOTE : Disclosure of Identity by writing Mobile No. or Making of passing request on any page of Answer Sheet will lead to UMC against the Student.